

SOLUTIONS FOR BUY-SIDE TRADERS

Access robust trade analytics, portfolio performance tools, global market data, StreetAccount news, and order and execution management tools to enhance communication between you and the portfolio managers at your firm.

The screenshot displays the FactSet trading platform interface for Amazon.com, Inc. (AMZN). The main window is divided into several sections:

- Top Left:** A list of market indices and their performance, including S&P 500, NASDAQ Composite, and various international indices.
- Top Center:** A table of market data for AMZN, showing the last price at 1243.755, a change of +1.67, and a volume of 1,946,090.
- Top Right:** A volume analysis chart showing trading volume over time, with a peak around 12:30 PM.
- Middle Left:** A detailed order book for AMZN, showing bid and ask prices, sizes, and VWAP.
- Middle Right:** A table of recent trades for AMZN, listing time, price, size, and counterparty.
- Bottom Left:** A news feed with headlines such as "PHIC Inst. Adds More Credence to Academic Medical Center Traction" and "DU Costco Can Gas Slip in 2016".
- Bottom Center:** A price chart for AMZN with a 50-day moving average and a 200-day moving average.
- Bottom Right:** A summary of the primary ticker AMZN-USA, including its current price, change, and volume.

LET YOUR WORKSPACE WORK FOR YOU

Use FactSet's multi-layered workspace, customizable right-click menu, and hotkeys to access displays that are aligned to your daily workflow. You can easily customize your workspace or rely on FactSet's experienced and knowledgeable support staff to help configure FactSet to meet your needs. As a FactSet client, you will also gain automatic access to our full range of mobile apps, bringing you global market data, news, and company intelligence in real time wherever you are with your iPhone, iPad, or Android.

GAIN INSIGHT FROM CONSOLIDATED MARKET INTELLIGENCE

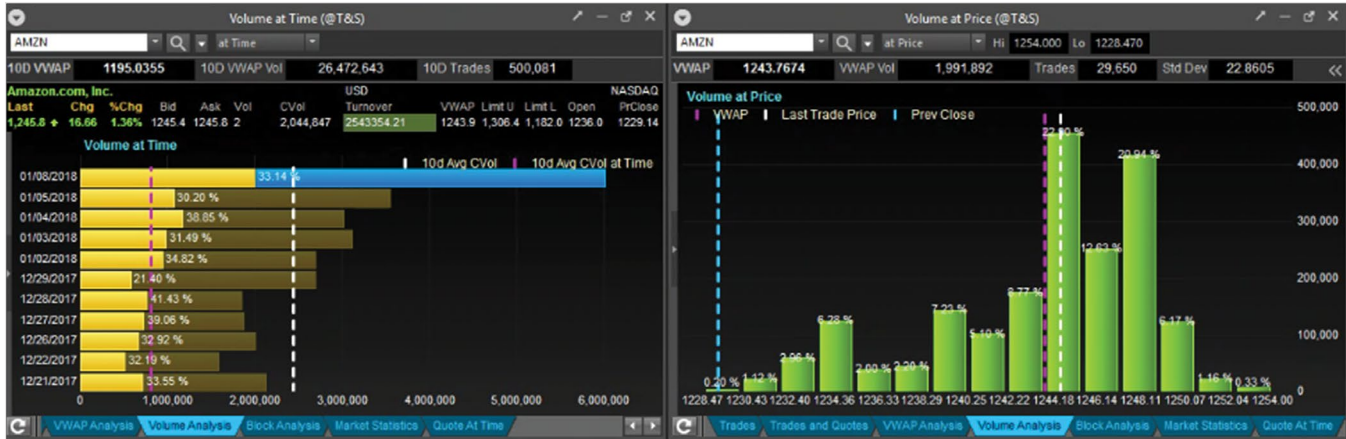
Build customized market summary reports with information sourced from market and economic data, news reports, broker research, events, and performance data. Select inputs relevant to your portfolio and watch lists, and schedule beginning- and end-of-day overviews for delivery straight to your inbox.

The screenshot shows the Portfolio View for SPDR S&P 500 ETF TRUST. The main feature is a horizontal bar chart showing the contribution of various sectors to the portfolio's performance. The sectors and their contributions are:

- Information Technology: 0.028
- Utilities: 0.011
- Real Estate: 0.009
- Industrials: 0.006
- Consumer Staples: 0.004
- [Unassigned]: 0.000
- Telecommunication Services: -0.001
- Consumer Discretionary: -0.004
- Materials: -0.008
- Energy: -0.008
- Financials: -0.039
- Health Care: -0.008

Below the chart is a table of the top holdings in the portfolio:

SZWK	Ticker	Security Name	T	Last	Chg	Vol	Weight	Contribution	Value Chg	Target Price	Upside/Downside
Totals							100.00	-0.070	-189		
1	FCN	Freddie Group Inc	1	1943.20	19.66	1.00%	0.36	0.004	11	2005.18	8.79%
2	UNP	Union Pacific Corporation	1	138.76	1.23	0.90%	0.36	0.004	11	138.81	-0.13%
3	STY	Seasteq Technology PLC	1	45.53	2.99	6.97%	0.06	0.004	15	39.62	-13.75%



ACCESS THE NEWS YOU NEED NOW

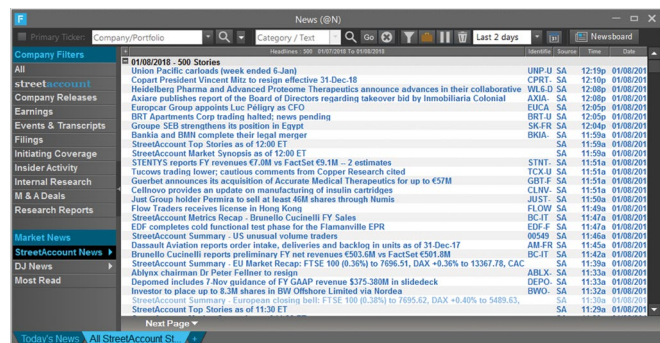
Uncover news and market insight relevant to your portfolio with access to premier news sources including FactSet StreetAccount. Enhance internal communication with real-time access to your research team’s outlook and sentiment updates, including analyst recommendations, price targets, and research notes, all in a single view.

FIND THE LIQUIDITY YOU NEED

Take advantage of FactSet’s integration of IOIs and ATs powered by ULLINK. Uncover liquidity sources for individual stocks using indications of interest, advertised volumes aggregated by broker, natural liquidity, IOI/AT correlations, trading patterns, and more. Leverage FactSet’s regional quote montage to view trading activity across all exchanges. Analyze depth of book for global markets with FactSet’s Level 2 display. Automate straightforward trades directly with FactSet’s order and execution management solutions, and focus on difficult, illiquid, or otherwise sensitive orders.

STRENGTHEN YOUR PARTNERSHIP WITH PORTFOLIO MANAGERS

Access all portfolio holdings and maintain a transparent view of performance down to the last basis point. Be the eyes and ears of the portfolio throughout the day and easily identify portfolio advancers and decliners. Spot unusual volume across portfolio holdings, as well as the positions that have diverged from their VWAP. Complete the portfolio lifecycle with optimized algorithm selection and automated trading using FactSet’s fully integrated, multi-asset class order and execution management system, including Portware Enterprise.



DECIDE WHEN AND HOW TO EXECUTE ORDERS

Analyze liquidity and volume by time, price, and venue to make sense of trading activity and determine your optimal route to best execution. Quickly determine if current price and volume levels support a transaction and show that your timing and routing skills have generated alpha.

- View calculated forecasts for the amount of volume that is expected to trade for the remainder of the day
- Access volume by exchange to know where previous orders have been routed
- Compare where a security is trading relative to your target purchase price as well as VWAP
- Identify how much volume took place above or below your trade during a specified period